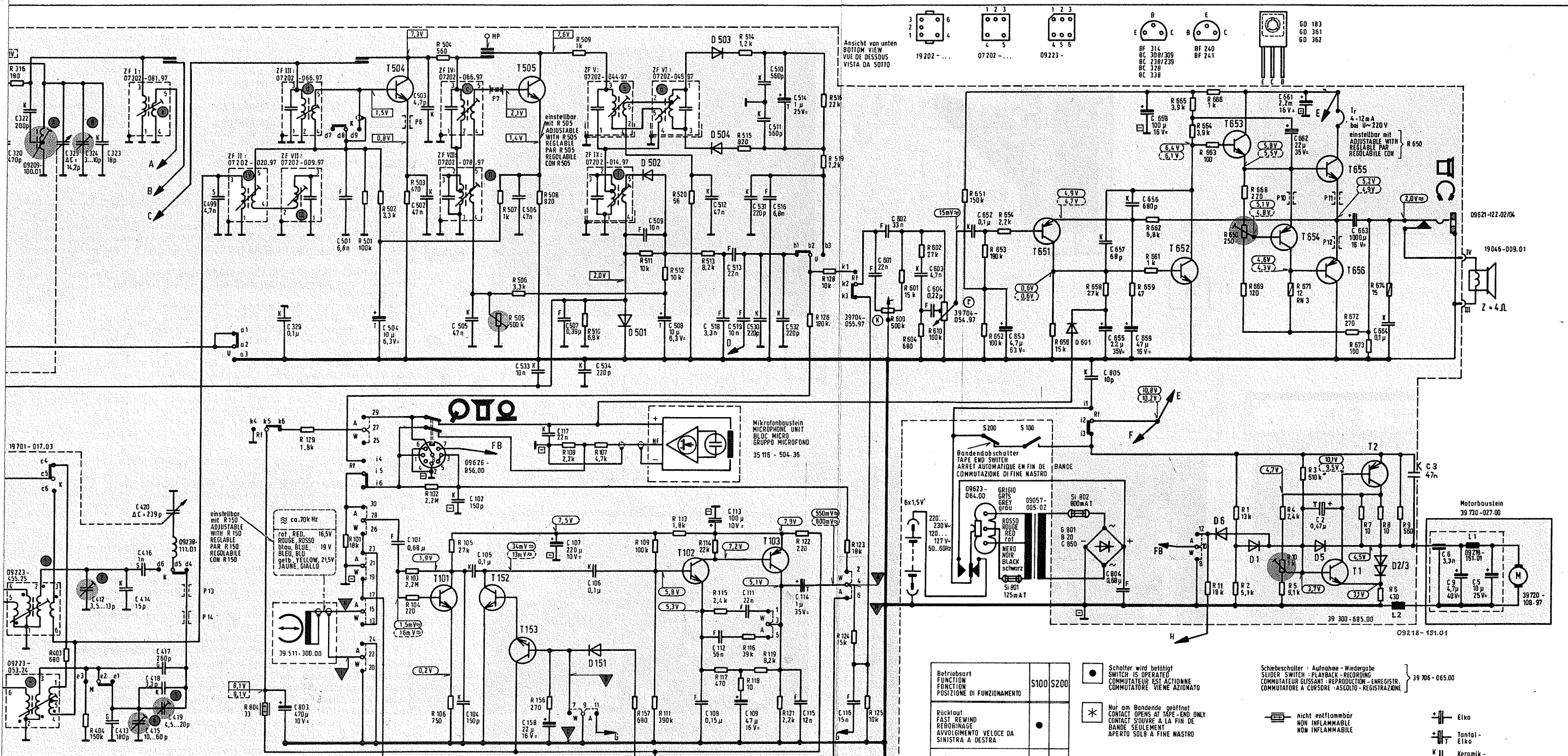


GO402

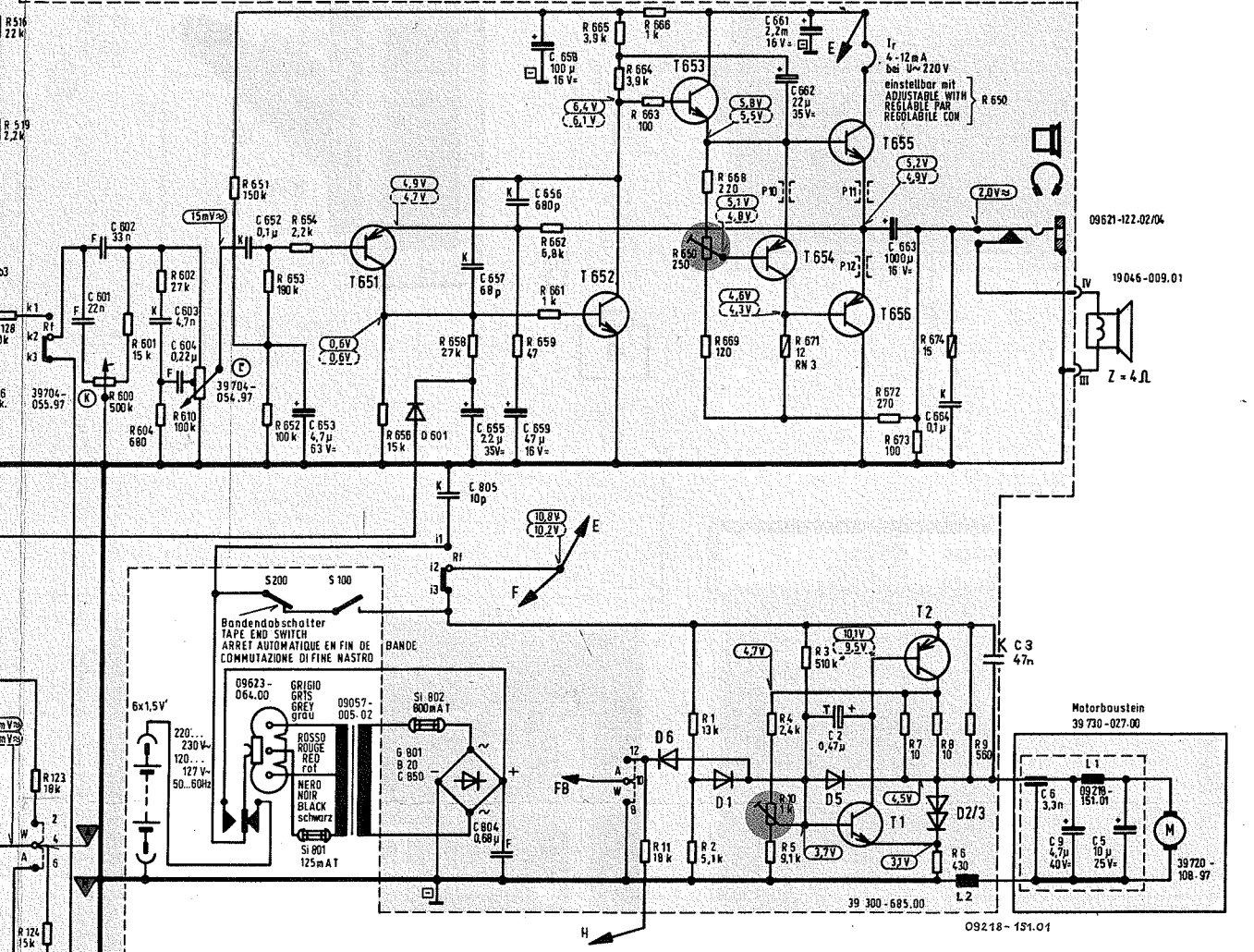
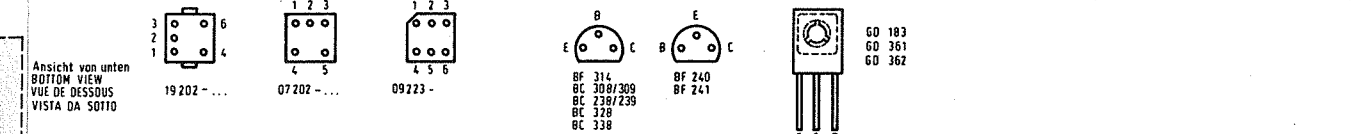


- T 301 BF 314
 T 302 BF 241
 T 403 BF 241
 T 504 BF 241
 T 505 BF 240
 T 1 BC 238 B
 T 2 GD 183
 T 101 BC 238 C
 T 102 BC 238 B/C
 T 103 BC 308 B
 T 151 BC 338-16/25
 T 152 BC 238 C
 T 153 BC 238 C
 T 651 BC 309 A/B
 T 652 BC 238 B/C
 T 653 BC 338-16/25
 T 654 BC 328-25
 T 655 GD 361
 T 656 GD 362
 D 801 BC 338-16/25
 D 501 B2 102/2V1
 D 502 1N 60
 D 503/504 AA 112
 D 1 9554-211.97
 D 2/3 9554-282.97
 D 5 9554-330.04
 D 6 9554-027.04
 D 151 9554-110.97
 D 801 9554-123.97
 D 601 T D 129

Bereiche : TONBANDS :
 87,5 ... 104 MHz
 5,9 ... 16 MHz
 510 ... 1620 kHz
 145 ... ca.275 kHz

Änderungen vorbehalten
 ALTERATIONS RESERVED
 MODIFICAZIONI RISERVATE
 CON RISERVA DI MODIFICA

+ Masse GROUND TERRE
 Spannungen gemessen bei Netzbetrieb 220V ~ gegen ohne Signal
 für AM FM bei TB Stop
 für W A bei RF aus
 Eingangswiderstand des Voltmeters R_i = 1MΩ
 VOLTAGES MEASURED AT MAINS OPERATION 220V AC AGAINST WITHOUT SIGNAL
 FOR AM FM AND TAPE STOP
 FOR W A AND RADIO OFF
 INPUT RESISTANCE OF VOLTMETER R_i = 1MΩ



Betriebsart FUNCTION RUBRICAZIONE POSIZIONE DI FUNZIONAMENTO	S100	S200
Rücklauf FAST REWIND REBOBINAGE AVVOLGIMENTO VELOCE DA SINISTRA A DESTRA	•	•
Vorlauf FAST WIND AVVICINAMENTO VELOCE DA DESTRA A SINISTRA	•	•
Aufnahme RECORDING ENREGISTRAMENT REGISTRAZIONE	•	•
Start START MARCHE START	•	*

- Schalter wird betätigt
SWITCH IS OPERATED
COMMUTATEUR EST ACTIONNE
COMMUTATORE VIENE AZIONATO
- * Nur am Bandende geöffnet
CONTACT OPENS AT TAPE-END ONLY
CONTACT SOUVRE A LA FIN DE
BANDE SEULEMENT
APERTO SOLO A FINE NASTRO
- A Schalterkontakt
SWITCH CONTACT
CONTACT DE COMMUTATEUR
CONTATTO DI COMMUTATORE

Schiebescalter : Aufnahme-Wiedergabe
 SLIDER SWITCH : PLAYBACK-RECORDING
 COMMUTEUR GLISSANT : REPRODUCTION-ENREGISTR.
 COMMUTATORE A CURSORE : ASCOLTO-REGISTRAZIONE

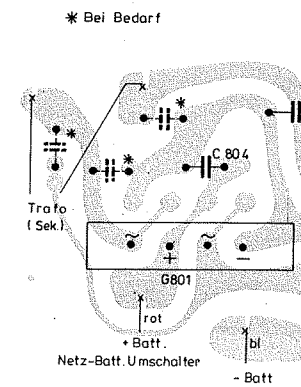
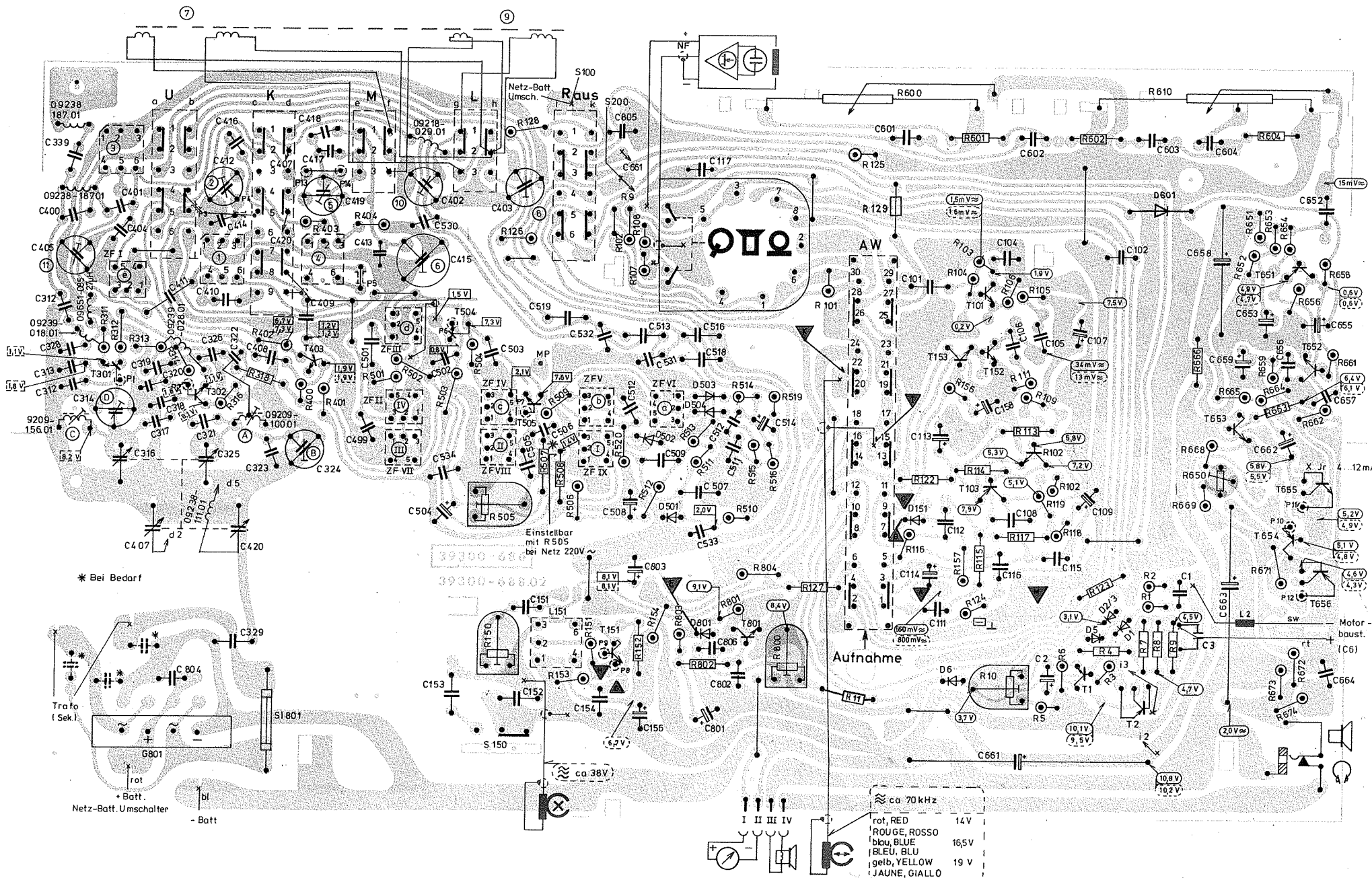
- nicht entflammbar
NON INFLAMMABILE
NON INFLAMMABILE
- Elko
• Tantalelko
• Keramik-Kond.
• Folien-Kond.
• Styroflex-Kond.
• Glimmer-Kond.
• 0309
• 0414
• 0207

TENSIONI MESSURE A UNA TENSIONE SECTEUR DE 220V ~, PAR RAPPORT A [] , SANS SIGNAL
 POUR [AM] [FM] ET MAGNETO STOP
 POUR [REPR] [REC] ET RADIO ARRETEE
 RESISTANCE D'ENTREE DU VOLTMETRE R_i = 1MΩ

TENSIONI MISURATE CON FUNZIONAMENTO A 220V ~ VERSO [] SENZA SEGNALE
 PER [AM] [FM] A TB STOP
 PER [REPR] [REC] A RF. SPENTO
 RESISTENZA D'INGRESSO DEL VOLTMETRO R_i = 1MΩ

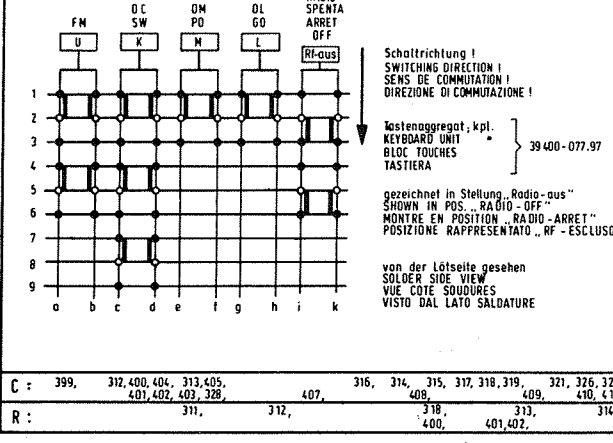
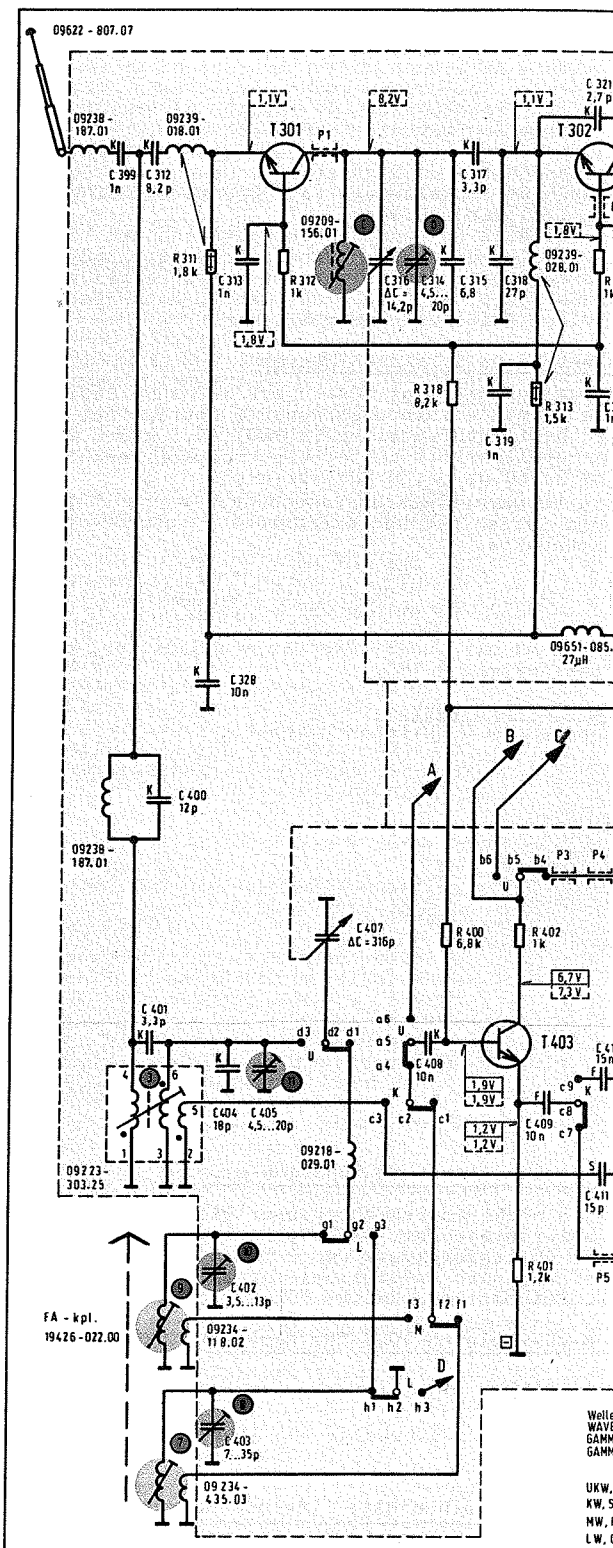
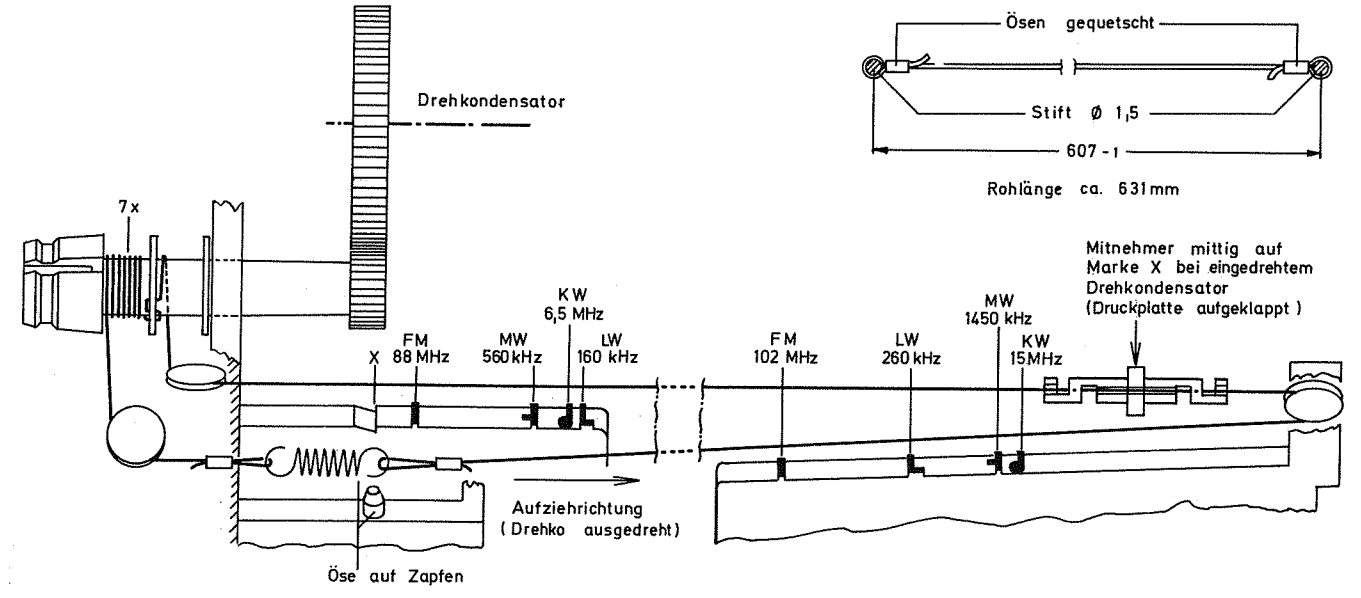
GRUNDIG
C 4150
C 4200
 Automatic
 (34013-906.00)

322, 325, 324, 327, 416, 417, 420, 499, 328, 501, 504, 505, 507, 503, 505, 506, 533, 107, 507, 534, 509, 508, 512, 518, 513, 511, 109, 111, 531, 532, 514, 114, 113, 601, 602, 603, 604, 652, 653, 805, 655, 656, 659, 658, 661, 662, 2, 663, 664, 6, 9, 3, 5, 316, 403, 404, 804, 129, 101, 501, 150, 103, 104, 127, 151, 505, 506, 507, 508, 509, 510, 107, 511, 109, 512, 113, 114, 115, 514, 515, 117, 118, 116, 114, 516, 126, 128, 519, 157, 111, 800, 520, 802, 803, 116, 801, 119, 121, 122, 123, 124, 125, 600, 601, 603, 602, 604, 610, 651, 652, 653, 654, 656, 657, 658, 659, 661, 662, 664, 665, 666, 1, 668, 669, 671, 672, 673, 674, 6, 7, 8, 9, 11, 663, 667, 2, 850, 4, 5, 10, 3,
--



Druckschaltungsplatte mit Verdrahtung (Ansicht von der Lötseite)
PRINTED CIRCUIT BOARD WITH WIRING (SOLDER TAG VIEW)
Plaque circuit imprimé avec câblage (VUE COTE SOUDURES)
PIASTRA STAMPATA (VISTA DAL LATO DELLE SALDATURE)

Seilzug
DRIVE CORD
ENTRAINEMENT
MONTAGGIO DELLA FUNICELLA



C	399,	312,400,404,	313,405,	316,	314,	315,	317,318,319,	321,326,320
R		401,402,403,328,	407,	408,	318,	313,	409,	410,411
		311,	312,	400,	401,402,			